

# Tools and Accessories

## Tool03 – Atlas Pasta Queen – Pasta Machine

Every Polymer clay artist will need a pasta machine sooner than later. These are what I class to be the second most important tool after an oven thermometer. The atlas Pasta machine is a strong and sturdy machine with 9 settings.



## Tool17 – Foredom Buffer

These are available by indent only. They are the perfect buffer for highly polishing your finished polymer clay pieces.



## BILCBF4 - Loose White Muslin Buffs – Unstitched

These buffs have only one row of stitching around the arbor hole, which is reinforced with leather and shellac (L/S). Made of Finex (80 x 80 weave) muslin with combed edges. The open layers provide a softer polishing action and conform to contours and curves. Use with rouge for colouring or final polishing operations. Perfect for buffing Polymer clay.



## BILCB4 – Muslin Buffing Wheels

Fine Weave (80 x 80) Finex Muslin Buffs hold compounds well but the tighter weave results in longer life. The center pinholes are reinforced with shellac (S) or leather and shellac (L/S) for a tight fit on tapered mandrels and greater durability. Combed edges do not require break in or combing to hold compound. The fine weave and stitching make them durable and especially suitable for polishing with rouge.



## BICBY4 - Yellow Treated Cotton Buffs 4"

Made with chemically treated extra fine (86 x 80) weave fabric, these buffs are stiffer than untreated ones. They will cut faster and last 2 to 3 times longer than white muslin buffs. Combed edges hold compounds without break in or combing. Center pinholes are reinforced with shellac (S) or leather and shellac (L/S).



## DS3010 – Metal Oven Thermometer

Perfect for the Polymer clay artist. Highly accurate, hang or stand, durable stainless steel, travels well and the most important tool for working with Polymer clay.



## OTT1 – Ott Light Task lamp

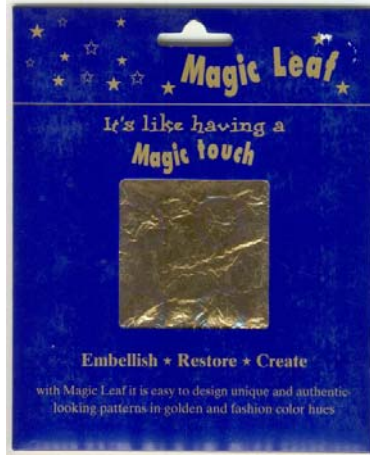
The Ott Light Task Lamp is a lightweight dream, providing cool, natural daylight illumination in a compact design. Position the light in various angles, from parallel to the desktop or straight up to illuminate larger areas, or attach it to the wall to save space. You'll see tiny details with less eyestrain. This is the perfect light for fine painting, illustration, colour matching, and more!



# Tools and Accessories

## Leafing Foil

Magic Leaf makes it simple to transform a variety of objects into shimmering masterpieces. Available in three colours and five patterns, Magic Leaf special formulation makes it a breeze to "go for the gold" and beyond!



**ML708-10**  
Gold



**ML721-10**  
Silver



**ML722-10**  
Copper



**ML742-06**  
Mikado Copper



**ML740-06**  
Mikado Gold



**ML752-06**  
Sun Copper



**ML762-06**  
UFO Copper



**ML760-06**  
UFO Gold



**ML780-26**  
Turtle Copper



**ML780-06**  
Turtle Gold



**ML782-06**  
Labyrinth Copper

# Tools and Accessories

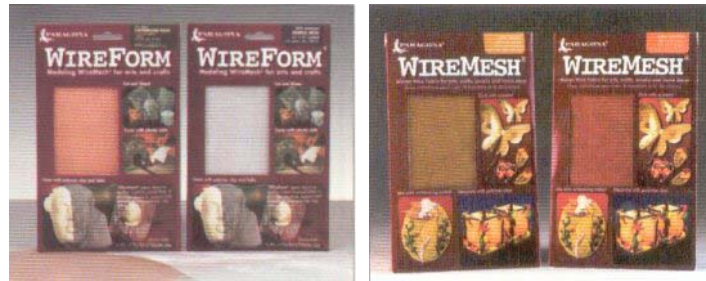
## Wireform Mesh and Sheet

WireForm is a specially manufactured metal mesh that is pliable enough to mould, yet sturdy enough to add structure to clays and modelling materials.

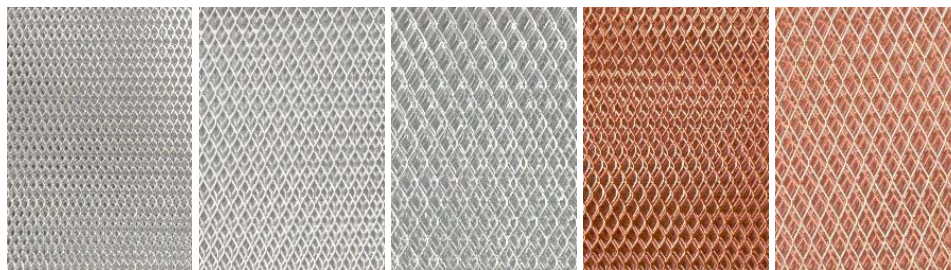
WireForm® is perfect for the many modelling and sculptural design challenges facing artists, crafters, architects, and students. A flat piece of WireForm® easily transforms into three-dimensional shapes by simply moulding, crimping, twisting, expanding, and gathering.

WireForm® is available in a selection of expandable and woven metal mesh patterns, designed to provide a wide variety of art, craft, and model-making options. The expandable mesh is made from specially manufactured metals that give it incredible flexibility and strength. Its unique raised diamond strands expand to form three-dimensional shapes. Because it can stretch into tight contours and shapes, it is ideal for detailed projects and delicate crafts.

The woven wires create a structural grid that assumes different textures as it is bent and moulded. The heavier meshes are recommended for supporting sculptures using clay.



Aluminium or Copper Mesh  
Brass or Copper sheet



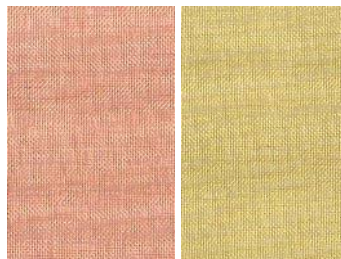
**AMWF01**  
**Contour**

**AMWF02**  
**Sparkle**

**AMWF03**  
**Diamond**

**AMWF04**  
**Impression**

**AMWF05**  
**Copperform**



**AMWM01**  
**Copper**

**AMWM02**  
**Brass**

# Tools and Accessories



**Blade02  
PolyBlade**

**Tool15  
Bead Making Tools**

**Tool16  
TriBead roller**

**Tool 06  
PolyRuler**

## **PolyBlade**

**IMPROVED DESIGN** - now includes a value-added blade cover that's also a handle! Designed specifically for use with polymer clay, the PolyBlade is a full 15cm (6") long, 2cm (3/4") wide, and is thicker than razor blades. It provides clean, accurate cuts even on large diameter canes or polymer clay blocks and stays sharp two to three times longer than other blades.

## **Bead Making Tools Set™**

This set contains seven indispensable tools for all of your polymer clay bead projects:

Two mandrels (1.6 and 3.2mm x 19cm long)

Roller Bead Template

Wet/Dry Sandpaper

Straight Cutting Blade

Dimple Tool

Sponge

## **Tri-Bead Roller™**

Making your own beads has NEVER been easier! This tool makes round, oval, and bicone beads in three easy steps:

1. Soften clay then measure using the supplied ring.
2. Roll softened clay into a ball and place into one of the channels in the base.
3. Place over base and slide back and forth.

In no time you'll be making several beads at once!

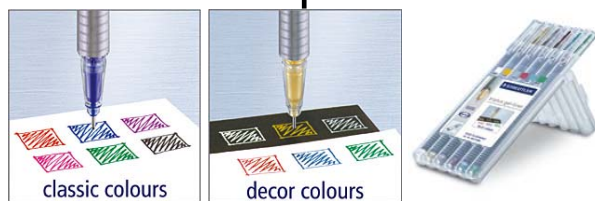
## **PolyRuler**

The PolyRuler is the only ruler designed with the polymer clay artist in mind. This six-sided tool ensures perfect and uniform polymer clay beads and strips every time.

Each side has markings in one of six increments from 3 to 20 millimetres. Simply press the PolyRuler gently into the clay then cut with a sharp blade at the desired marks. It's that simple!

# Tools and Accessories

## Staedtler Triplus Gel Pen Sets



**463CSB6 – set of 6 Classic colours**

**463DSB6 – set of 6 Décor colours**

The water based Triplus Gel Rollers from STAEDTLER excel with their fine needle tip (line width 0.4 mm) and ergonomic triangular design, which make for fatigue free drawing and writing. They are light resistant and document safe (except silver) and equipped with the innovative DRY SAFE system, i.e. they can lie open for several days without drying out. In addition the polypropylene shaft guarantees a long life span. We offer Triplus gel liners in a clever design pack of 6 classic colours and 6 décor colours, which are also suitable for opaque lettering on dark and coloured paper.

Wallet of 6 Triplus Gel liners - Decor or Classic colours

The STAEDTLER Triplus gel-liner,

satisfies even the highest demands when it comes to quality and innovation.

- \* Gel roller with fine needle tip
- \* Acid Free
- \* Ergonomic triangular barrel for effortless, fatigue-free writing
- \* DRY SAFE - can be left uncapped for days without drying up (test ISO 554)
- \* Lightfast, waterproof, indelible (except silver) in accordance with ISO 14145-2
- \* Water-based gel
- \* With clip
- \* PP barrel guarantees long service life
- \* Stand-up STAEDTLER box
- \* 6 brilliant classic or Décor colours
- \* Line width: 0.3 mm

## Staedtler Triplus Fineliner Pen Set



**334SB10 – set of 10 Triplus Fineliner pens**

These slim, triangular-barrel pens are ergonomically designed for comfortable drawing and writing. Super fine 0.3 mm porous points are protected from damage by a metal-clad tip. Staedtler's acid-free, non-permanent, "dry safe" ink won't dry out even if the pen is left uncapped for several days. The innovatively designed case forms a stand-up display and keeps pens organized.

- \* Fine liner with superfine, metal-clad tip
- \* Ergonomic triangular barrel for effortless, fatigue-free writing
- \* DRY SAFE - can be left uncapped for days without drying up (test ISO 554)
- \* Washes out of most textiles
- \* Water-based ink
- \* Acid Free
- \* With clip
- \* PP barrel guarantees long service life
- \* Stand-up STAEDTLER box
- \* 20 brilliant colours
- \* Line width approx. 0.3 mm

Zigzag Polymer Clay Supplies Printed Catalogue and Information sheets

8 Cherry Place, Casebrook, Christchurch 8005, New Zealand

Ph: 03-359-2989 Fax: 03-359-6394 Email: [sales@zigzag.co.nz](mailto:sales@zigzag.co.nz) Web: [www.zigzag.co.nz](http://www.zigzag.co.nz)

For a printable pricelist and order form please contact Zigzag Polymer Clay Supplies.

# Tools and Accessories

## Shiva Iridescent Artist's Paintstik Oil Colours

Unlike conventional oil colours, Paintstik Oil Colours are dry to the touch in 24 hours! They are perfect for sketching out shape, composition, and colour without messy palettes or mixing cups.

Colours can be spread or blended with a brush, knife, or Colourless Blender. The colours are completely compatible and can be blended with any oil paints. Use turpentine to thin. Paintstik colours are self-sealing — just peel off the film before each use.

There are no unpleasant odours or fumes, so you can paint virtually anywhere, at any time, and on almost any surface: canvas, paper, wood, plastic, metal, and fabric. They are non-toxic and hypoallergenic.

Shiva Iridescent Artist's Paintstik Oil Colours are self-sealing and permanent. Apply these paintstiks to fabric, paper, wood, floral arrangements, and more for a colourful shine. Paintstiks are 11.5cm (4-1/2") Long x 1.3cm (5/8") Diameter.

Available colours:

- SSPAISBL – Iridescent Blue
- SSPAISBR – Iridescent Brown/Bronze
- SSPAISICO – Iridescent Copper
- SSPAISIGO – Iridescent Gold
- SSPAISILGO – Iridescent Light Gold
- SSPAISILGR – Iridescent Leaf Green
- SSPAISIPU – Iridescent Purple
- SSPAISIRB – Iridescent Blender
- SSPAISIRE – Iridescent Red
- SSPAISISV – Iridescent Silver
- SSPAISITU – Iridescent Turquoise



## FP038 – Friendly Plastic Marbling Comb



This new Friendly Plastic® tool lets you create dynamic swirls in softened Friendly Plastic® quickly and easily. Simply cut strips of Friendly Plastic® to desired size and lay them side on a non-stick electric Heat strips at 200°C (300°F) blend together. Then, draw the comb through the strips in a wavy pattern and allow cooling. The Friendly Plastic® Marbling works just like a needle tool you multiple, evenly spaced swirls same time.



side-by-giddle. until they teeth of the straight or

Comb except it to make at the



**Country Garden Paper Shapes** are amazingly close in texture and appearance to the real thing. Crafters will love these designs to accent any craft project. They can be used to add a personal touch to greeting cards, picture frames, gift-wrapping, memory albums, vases...anywhere the imagination will allow.

They work perfectly with modern decoupage techniques to create a sophisticated, upscale accent to hundreds of home decor projects. By combining and layering, even beginners can create exquisite three-dimensional embellishments.

Country Garden Paper Shapes come packaged in five assortments that include ideas and suggestions for their use as well as easy to follow instructions for creating three-dimensional flower designs.

Zigzag Polymer Clay Supplies Printed Catalogue and Information sheets

8 Cherry Place, Casebrook, Christchurch 8005, New Zealand

Ph: 03-359-2989 Fax: 03-359-6394 Email: [sales@zigzag.co.nz](mailto:sales@zigzag.co.nz) Web: [www.zigzag.co.nz](http://www.zigzag.co.nz)

For a printable pricelist and order form please contact Zigzag Polymer Clay Supplies.

# Tools and Accessories



## **KPFWPL - Fluid Writer Pen – Large**

### **KPFWPS - Fluid Writer Pen - Small**

Fluid Writer Paint brush Large

Used for making consistent width lines writing and drawing with acrylics, inks and other mediums on any type of surface. Hold this tool like a paintbrush and you can work on any easel or tilted project.

HOW TO USE:

Make sure the medium you are using is thin enough to go through a tiny tube with ease. Use a brush or eyedropper to fill the cup. Hold the tool like a paintbrush; lightly touch the tip to the surface. Let the tip glide over the surface. Never press down on the tip. If medium does not release put enclosed wire through the cup and out the bottom of the tip. Remove the drop of medium off the wire and then pull the wire out. DO NOT leave medium in cup to thicken or dry. Severe damage will occur!

CLEANING:

Thoroughly clean cup and stem after each use by soaking in warm water. To clean inside the stem, use the thin metal needle and push it through the stem. Rinse pen and dry well. To protect the thin metal plunger, use protective black cover.



## **KPGPL - Gold Fluid writer Pen – Large**

### **KPGPS - Gold Fluid writer Pen - Small**

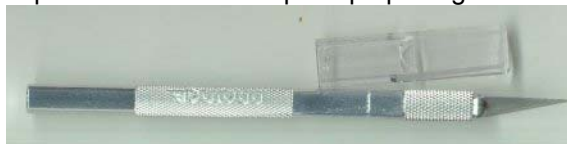
The Gold pen may be used with Liquid gold; platinum or china paints that are used on china, glazed fired ceramic ware or glass.

DIRECTIONS:

With a toothpick, place 2 or 3 drops of (metallic) gold or china paints into the brass cup. Hold the pen in an upright position at right angles to the working surface. Draw the pen slowly over the surface, allowing the point to glide gently. Never press on the pen tip.

TO CLEAN:

Clean the pens after each use by dipping it into clean turpentine, acetone or gold facilitator. With cotton on the end of a toothpick, dipped in cleaner, wipe clean the inside of the brass cup and then clean the pen tip opening with the wire plunger.



## **BW02 - Pro Edge Utility Knife**

With textured aluminium handle for secure grip.



## **KMPRO – Needle tool – Packaged**

Used to cut heavy clay strips, designs and holes. This tool is used by many artists, and performs a wide variety of purposes. This 16cm long tool has a sharp steel needle and is firmly set in a textured aluminium handle providing a firm grip. Perfect for forming a bead hole.

# Tools and Accessories



**KMDBSL - Double end embossing tool Large** - Dia of ball ends are .072mm & .114mm  
**KMDBSS - Double end embossing tool Small** - Dia of ball ends are .030mm & .045mm  
Used for many applications. Artists are finding many uses for this handy little tool. Each stylus is made of hardened steel and firmly set into a hardwood handle



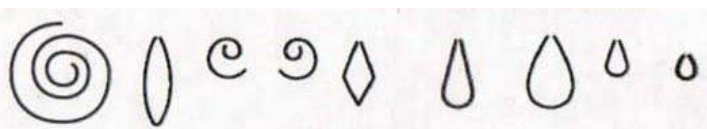
## **KMSPD – Salt and Pepper Drill**

This tool makes the right size hole for salt and pepper containers. Each tool has high carbon steel drills set into a hardwood handle. Very useful tool for polymer clay artists to make holes in their work after baking.



## **KMLFTS - Lady Finger Tool Set**

Originally designed for separating fingers and toes, these handy little tools are capable of fine detailed work in the right areas. Precision hardened steel burr tips are embedded in smooth hardwood handles.



## **KMKDS24 – Decorator Set**

Includes 9 tools, spatula and pan. Used to make hundreds of exciting designs for things such as folklore stories.



## **BP2S125 - Steel Needles 20cm 1.25mm**

## **BP2S150 - Steel Needles 20cm 1.50mm**

Very fine knitting needles useful for putting holes in unbaked beads or suspending beads for baking.



## **Brush0** - Taklon No 0 brush

## **Brush00** - Taklon No 00 brush

## **Brush000** - Taklon No 000 brush

Fine tipped paint brushes for applying paints and powders.



## **Blade03 – Wavy Blade**

For creating rippled effects and cutting rickrack lines in polymer clay.

# Tools and Accessories



**CCRNT01 – Multi Tool Set 1**

**CCRNT02 – Multi Tool Set 2**

Interchangeable tool set designed by polymer artist Maree Segal.



**Clay Shaper set size No 2**

Shaped like a brush with an extra-firm, long-lasting rubber composite tip, Clay Shapers can be used for precision modelling, carving patterns through slips, painting glazes, and applying resists. Clay Shapers clean easily. Each set includes 5 tip shapes.

Clay shapers are a unique tool. They have been especially designed for medium scale work and for polymer clay artists. Set contains the following:

**Cup chisel tip:** Adjust contours and edges. Carve clay. Remove clay

**Taper Point:** Carve patterns through slips and glazes. Create clean linear strokes. Make broad forceful marks.

**Flat chisel:** Apply and carve clay. Create flat even strokes.

**Cup round:** Smooth throwing and scoring marks. Create soft edge strokes.

**Angle chisel:** Create expressive strokes. Work from thick to thin. Make precise marks.



**Tool19 – 8-pot paint strip**

Eight 4ml (1/6 oz) Pots in a Convenient Strip - Great for classes or wherever you have just the right mix of paint you would like to save. Pots are small enough so that paint will keep for a while between uses. Perfect for Liquid Sculpey mixes.

**Tool21 – Blank Lighter cover**

Cover these in your favourite polymer clay design. Have one near the BBQ!! Never loose the lighter again, fits a Bic flic lighter.



**Tool20 – Plastic coated telephone wire.**

Perfect for many projects. Plastic coated wire in assorted colours for antenna on creatures, additions to your art dolls. Can be baked with polymer clay.

# Tools and Accessories

## Sculpey Tools and Accessories



### PPACR – Sculpey Acrylic roller

The acrylic roller is 8" long and 1" in diameter. Quickly roll clay into sheets. Non-stick surface. Cleans easily with alcohol.

### PPAB - Sculpey Super Slicer

Each set comes with 2 super sharp blades that are perfect for cutting all types of clay. The flexible blade allows for curved cuts and slicing smear-free millefiori canes. Suggested for adult use only

### PPABS – Slicer Blade Assortment

Each set comes with 3 blades. A flexible blade, a stiff blade and a wavy blade. All super sharp

### PPAT301 – Sculpting tools

Get professional results with these three sturdy polypropylene sculpting tools. Sized right for both children and adults to use, they are useful for smoothing and carving unbaked clay items. Set also includes a roller for rolling clay into flat sheets.

### PPATHERM - The Sculpey Oven Dial Thermometer.

Designed for polymer clay, highly accurate, hang or stand, durable stainless steel



### PPACG1 – Sculpey Clay Gun

This indispensable tool has 19 interchangeable discs for making leaves, clovers, rope, braid, bricks, and tubes, grass, hair and more!

Made from top quality die-cast steel, this extruding tool provides a simple way to add attractive textural details to your polymer clay projects! The tool disassembles into three parts for easy cleanup with soap and water.

### SD1 – Sculpey Clay Softener 28ml (1oz)

Rescue old unbaked clay! Sculpey Clay Softener is a softening agent, which will improve the texture of clays that have become dry and crumbly. Use sparingly by adding a few drops and kneading into the clay until it softens. Also, great as an adhesive agent; apply sparingly to parts that will be attached to each other to increase the clay-to-clay bond!

### SCG – Sculpey Gloss Glaze 33ml (1.2 fl oz)

### SCM – Sculpey Matte Glaze 33ml (1.2 fl oz)

Add a durable seal or finish to baked polymer clay items with these compatible acrylic water-based finishes. Apply thin washes with a small brush. You can thin glazes with water if desired.

### PPNDC37 – Modelling tool set.

Set includes 3 modelling tools and the 5 in 1 clay tool. These modelling tools stamp, texture and mould clay with a wide variety of shapes and patterns. The 5 in 1 clay tool includes a roller, 2 separate cutting wheels, a moulding area and a pattern template.

# Tools and Accessories



## Fimo Tools and Accessories

### Lacquers

**F8703** - Fimo 10ml with brush Gloss spirit based lacquer

**F8704** - Fimo 35ml Gloss spirit based lacquer

**F8704-1** - Fimo 35ml Gloss Water based lacquer 35ml

**F8712** – Fimo Magic Bead Roller

Trendy jewellery ideas for an individual look - easy to make! Trendy and original fast results  
impressive colours easy to use

For the easy creation of equal-sized pearls, 3 different moulds.

**F8711** – Set of 4 modelling tools